

# ENERGY AWAKEN



BYD



HARMONY AUTO  
和諧汽車

#### 比亞迪荃灣4S店

地址：荃灣海盛路3號 TML 廣場地下 G 及 H 室  
電話：2663 1809 (銷售)  
營業時間：星期一至星期日 9:00a.m. - 8:00p.m.

#### 比亞迪將軍澳陳列室

地址：新界將軍澳澳唐街21號 廟滙坊 G-1B  
電話：26630 098  
營業時間：星期一至星期日 11:00a.m. - 9:00p.m.

#### 比亞迪沙田陳列室

地址：沙田安群街3號 京瑞廣場一期地下 G51 號  
電話：2663 0818  
營業時間：星期一至星期日 9:00a.m. - 8:00p.m.

#### 比亞迪西貢陳列室

地址：新界西貢惠民路28號 WM 酒店 LG 層 C1  
電話：2663 0890  
營業時間：星期一至星期日 10:00a.m. - 7:00p.m.

BYD ATTO 3  
2024





玄空黑  
Cosmos Black



攀岩灰  
Boulder Grey



蓝+黑  
Blue+Black

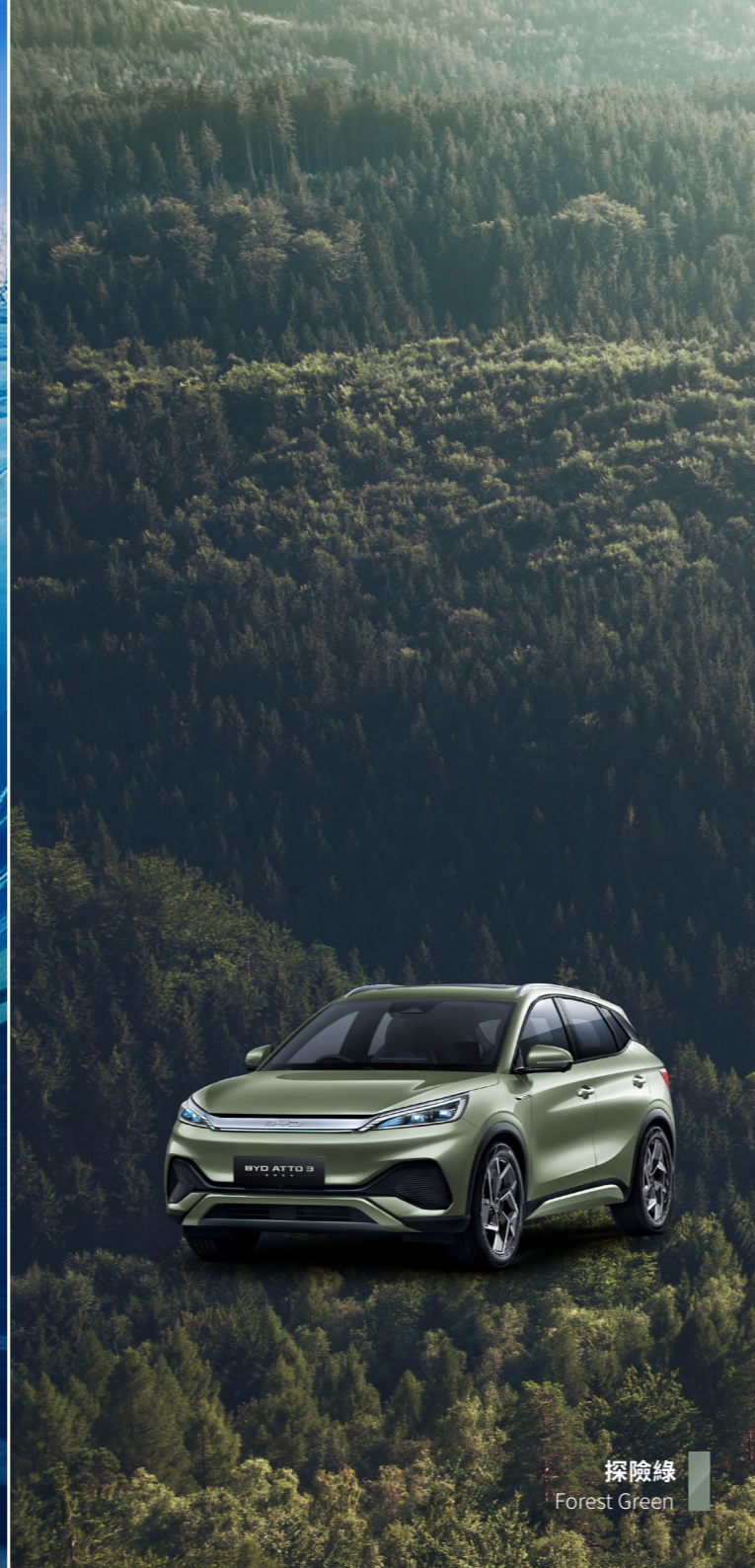




滑雪白  
Ski White



衝浪藍  
Surf Blue



探險綠  
Forest Green



藍+灰  
Blue+Grey



### 潮酷運動前臉設計

Sport Face Design



翼羽LED組合大燈  
Feather Crystal LED Combination Headlights

漸變D柱  
Ripple D pillar



### VTOL對外放電功能

The VTOL Mobile Power Station Function



### 超低風阻

Low Drag Coefficient

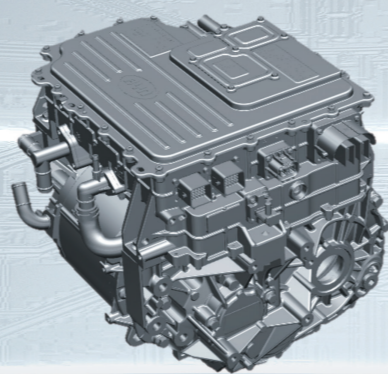
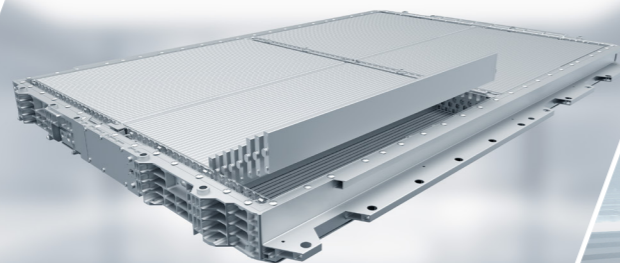


### 全新升級e平台3.0

All New e-Platform 3.0



### 刀片電池 Blade Battery

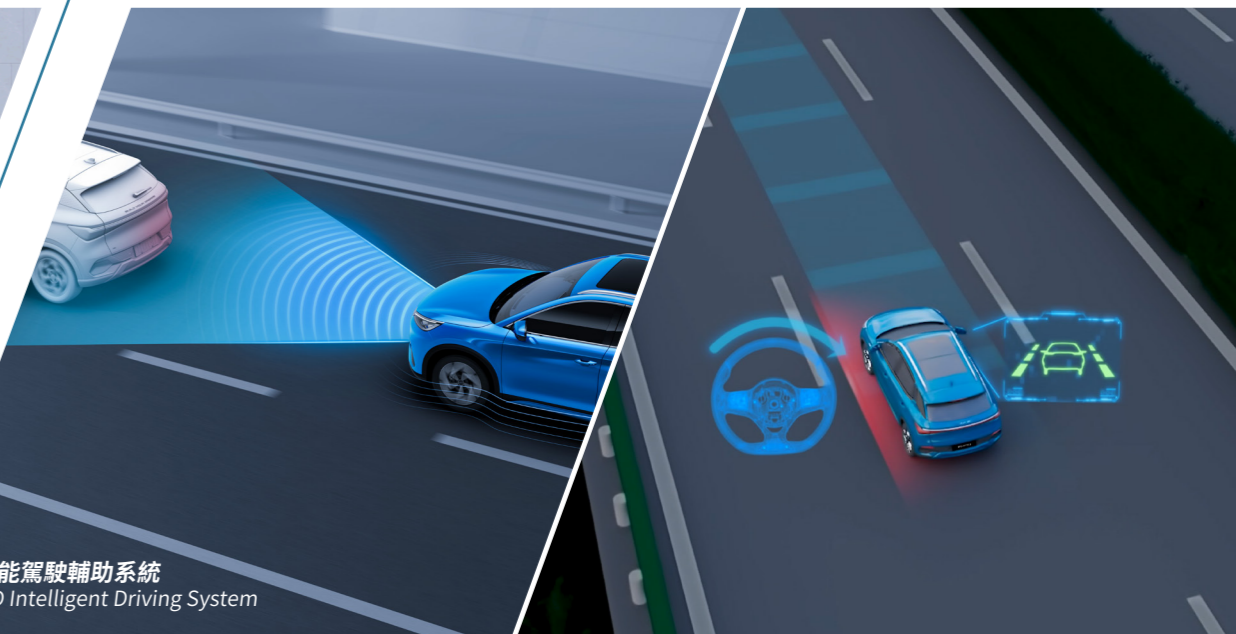


8合1電力總成 8-in-1 Electric Powertrain

7個安全氣囊  
7 Airbags



智能駕駛輔助系統  
BYD Intelligent Driving System





// 流线型中控台

Streamline Center Console



// 15.6英寸旋轉觸摸屏

15.6-Inch Rotating Touch Screen



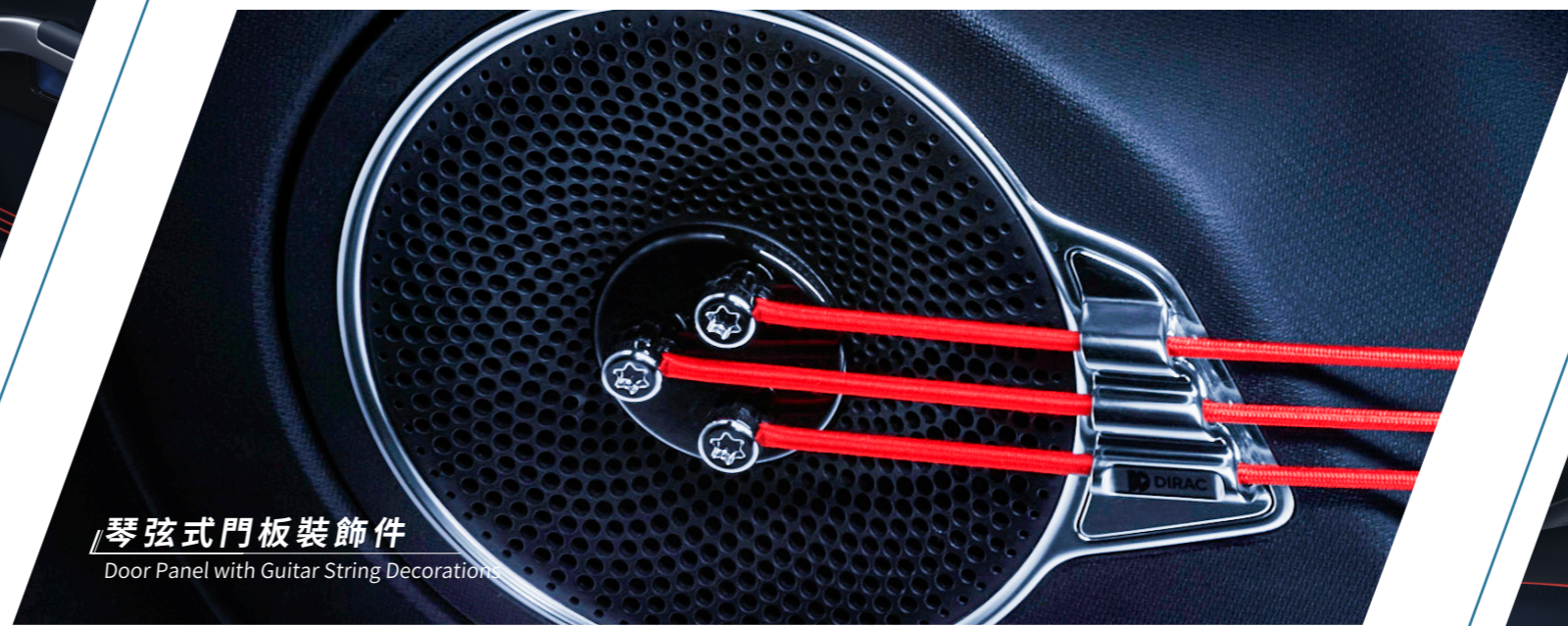
// 一體式運動座椅

Integrated Sports Seat



// 琴弦式門板裝飾件

Door Panel with Guitar String Decorations







## BYD ATTO 3 規格表 Specifications

車輛尺寸	Dimensions	尊貴型 Standard Range	旗艦型 Extended Range
長 (mm)	Overall length (mm)	4,455	
寬 (mm)	Overall width (mm)	1,875	
高 (mm)	Overall height (mm)	1,615	
前後輪距 (mm)	Wheel track - front / rear (mm)	1,575/1,580	
軸距 (mm)	Wheelbase (mm)	2,720	
驅動馬達	Electric Motor		
馬達類型	Motor type	交流永磁同步馬達 Permanent magnet synchronous motor	
最大功率 (kW)	Maximum power (kW)	150	
最大扭矩 (N.m)	Maximum torque (N.m)	310	
車輛性能	Performance		
百公里加速時間 (s)	Acceleration 0-100km/h (s)	7.9	7.3
續航里程 (NEDC標準) (km)	Driving range: NEDC (km)	410	480
座位數	Seating capacity	5	
驅動電池	Battery		
電池類型	Battery type	比亞迪磷酸鐵鋰刀片電池 BYD Blade Battery	
電池容量 (kWh)	Battery capacity (kWh)	49.92	60.48
車輛懸掛	Suspension		
前懸	Front suspension	麥花臣式 Mac Pherson Strut	
後懸	Rear suspension	多連桿式 Multi-link	
制動系統	Brake		
前制動類型	Front	通風碟式 Ventilated Discs	
後制動類型	Rear	實心碟式 Discs	
輪胎	Tyre		
車輪	Wheel type	鋁合金輪圈 Alloy	
輪胎尺寸	Tyre size	215/60 R17	235/50 R18

充電參數	New Energy	尊貴型 Standard Range	旗艦型 Extended Range
交流充電-Type2	AC charging port - Type 2(7kW)	●	●
CCS2 直流充電-70kW	DC charging port - CCS 2 (70kW)	●	-
CCS2 直流充電-88kW	DC charging port - CCS 2 (88kW)	-	●
VTOL移動電站功能	V2L function	●	●
回饋制動	Regenerative braking	●	●
車輛外型	Exterior		
全景天窗(帶防夾功能)	Panoramic sunroof with electric slide and anti-trap	●	●
尾門電動解鎖	Electric unlock tailgate	●	●
尾門一鍵開啟/關閉	One-touch open / close tailgate	-	●
車頂行李架	Roof rails	●	●
電動調節門邊鏡帶加熱功能	Electrically heated and adjustable exterior mirrors	●	●
門邊鏡電動摺合	Electrically retractable exterior mirrors	●	●
車廂設備	Interior		
多功能軚盤	Steering wheel mounted controls - audio, phone, ACC and multi-function display	●	●
電動助力轉向系統	Electric power assisted steering system	●	●
5英寸電子儀表	5" digital instrument panel	●	●
仿皮座椅	Synthetic leather seat	●	●
後排座椅60/40比例摺合	60/40 split fold rear seats	●	●
司機席座椅6向電動調節	6-way power adjustment - driver seat	●	●
助手席座椅4向電動調節	4-way power adjustment - front passenger seat	●	●
後排ISOFIX兒童座椅固定點	ISOFIX child restraint anchorage points (outer rear seats)	●	●
安全設備	Safety and Security		
前排前氣袋	Front airbags - driver & front passenger	●	●
前排側氣袋	Side airbags - driver & front passenger	●	●
前後排一體側氣簾	Side curtain airbags - front & rear	●	●
駕駛員座椅遠端氣袋	Far-side airbag - driver	●	●
前後排座椅安全帶未系提醒	Seat belt reminder - front & rear	●	●
360全景泊車鏡頭	360° View Monitor	●	●
胎壓監測系統	Tyre Pressure Monitoring System (TPMS)	●	●
前泊車感應裝置(2個)	Front 2 Radars	●	●
後泊車感應裝置(4個)	Rear 4 Radars	●	●
電子泊車制動系統 (EPB)	Electric Parking Brake System (EPB)	●	●
防鎖死制動系統 (ABS)	Anti-Lock Braking System (ABS)	●	●
電子車輛穩定系統 (ESC)	Electronic Stability Control (ESC)	●	●
牽引力控制系統 (TCS)	Traction Control System (TCS)	●	●

電子制動力分配系統 (EBD)	Electronic Brake Force Distribution (EBD)	●	●
陡坡緩降系統 (HDC)	Hill Descent Control (HDC)	●	●
ACC-S&G行走型全速自适应巡航系統 (ACC)	Stop & Go Full Speed Adaptive Cruise Control (ACC-S&G)	●	●
自动紧急制动系统 (AEB)	Automatic Emergency Braking System (AEB)	●	●
前方碰撞預警系統 (FCW)	Front Collision Warning (FCW)	●	●
後方碰撞預警系統 (RCW)	Rear Collision Warning (RCW)	●	●
盲点监测系统 (BSD)	Blind Spot Detection (BSD)	●	●
開門預警系統 (DOW)	Door Open Warning (DOW)	●	●
車道偏離預警系統 (LDW)	Lane Departure Warning (LDW)	●	●
车道保持輔助系統 (LKA)	Lane Keeping Assist (LKA)	●	●
後方橫向交通警告系統 (RCTA)	Rear Cross Traffic Alert (RCTA)	●	●
後方橫向交通制動系統 (RCTB)	Rear Cross Traffic Brake (RCTB)	●	●
車輛燈光	Light		
LED頭燈	LED headlight	●	●
“Follow me home”頭燈延時關閉功能	Follow me home headlight	●	●
智能高低燈系統 (AFL)	Adaptive Front Light (AFL)	●	●
LED晝行燈	LED daytime running light	●	●
LED尾燈	LED rear light	●	●
多色內飾氛圍燈	Multi-color gradient ambient lighting	●	●
單色內飾氛圍燈 (門把手)	Single-color gradient ambient lighting - door handle	●	-
多色內飾律動氛圍燈 (門把手)	Multi-color gradient ambient lighting with music rhythm - door handle	-	●
多媒體配置	Entertainment		
FM收音機	FM radio	●	●
*藍牙連接	*Bluetooth® phone connectivity and audio streaming	●	●
15.6英寸自適應旋轉懸浮PAD	15.6" intelligent rotating touch screen	●	●
喇叭(6個)	6 speakers	●	-
*Dirac HD sound® 喇叭(8個)	*Dirac HD sound®, 8 speakers	-	●
CarPlay®	*Apple CarPlay® (USB)	●	●
智能語音識別系統-英語	Voice assistant - English	●	●
USB前排2個 (typeA+ typeC)	USB - C port ×1 + USB - A port ×1, Centre console	●	●
USB後排2個 (typeA+ typeC)	USB - C port ×1 + USB - A port ×1, Rear	●	●
便利配置	Comfort & Convenience		
無線充電功能	Wireless phone charger	●	●
12V電源	12V socket	●	●

無匙啟動	Keyless entry & Keyless start	●	●
便携式卡片鑰匙	Portable card key	●	●
四門車窗一鍵升降帶防夾功能	4-door window one touch up-down with anti-pinch	●	●
前排中央扶手收納空間	Centre console storage compartment	●	●
空調系統	Air Conditioning		
自動空調	Automatic air-conditioning	●	●
熱泵空調	Heat pump	●	●
CN95 Air Filter	CN95 air filter	●	●
PM2.5 Air Filter	PM 2.5 air filter	-	●
補胎工具	Tyre repair kit	●	●

注意：

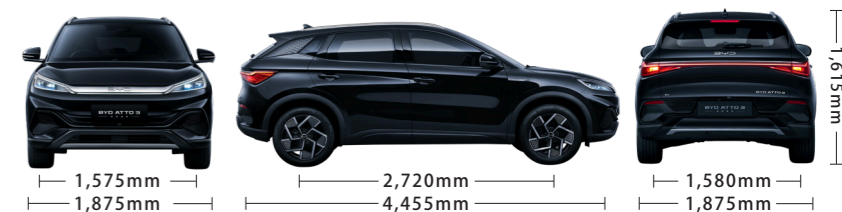
- 續航里程根據駕駛習慣、路況及交通等不同會有差異，提供的數據為計算值，僅供參考。
- Bluetooth®是藍牙技術聯盟 (Bluetooth SIG)的註冊商標。
- Apple CarPlay®是蘋果公司的註冊商標。需要有此功能的設備通過USB連接。
- Dirac HD sound®是Dirac Research AB公司的註冊商標。
- 車身顏色示意圖由於印刷等原因可能會與實際顏色有不同，圖片僅供參考。
- 駕駛輔助系統旨在為駕駛員提供幫助，不能替代駕駛員對確保行車安全的責任。
- 根據市場實際情況，比亞迪保有更改本手冊中車輛規格及配置的權力。

### NOTE

- The real Range is influenced by many factors such as individual driving style, load, traffic etc. The declared range is estimated for reference only.
- Bluetooth® is a registered trademark of Bluetooth SIG, Inc. Compatibility and functionality varies depending on device.
- CarPlay® is a registered trade mark of Apple Inc.
- Dirac HD sound® is a registered trade mark of Dirac Research AB .
- Colours depicted are a guide only and may vary from actual colours due to the printing.
- Driving assist system are not a substitute for the driver’s responsibility of the vehicle.
- BYD reserves the right to vary vehicle specifications and standard features from those detailed in this brochure.

### 外形尺寸

Dimensions









**BYD 沙田服務中心 (即將營業)**

地址: 沙田大圍成運路 2-8 號地下

電話: 2663 1008

**BYD 比亞迪荃灣4S店**

地址: 荃灣海盛路3號TML廣場

電話: 2663 1809

**BYD SHA TIN Service Center (Opening Soon)**

ADD: G/F., 2-8 Shing Wan Road,  
Tai Wai, Shatin

TEL: 2663 1008

**BYD Tsuen Wan 4S Center**

ADD: Unit G&H, G/F, TML Tower, No. 3  
Hoi Shing Road, Tsuen Wan

TEL: 2663 1809

**BYD SHA TIN**

ADD: Shop G51, G/F., Kings Wing  
Plaza 1, 3 On Kwan Street, Shatin

TEL: 2663 0818

**BYD SAI KUNG**

ADD: Shop C1, WM Hotel, 28 Wai Man  
Road, Sai Kung

TEL: 2663 0890

**BYD TSEUNG KWAN O**

ADD: Shop G-1B, Papillons Square, 21 Tong  
Chun Street, Tseung Kwan O

TEL: 2663 0098

**BYD YAU TONG Service Center**

ADD: Shop A-B&D, G/F, Wing Shan Industrial Building,  
428 Cha Kwo Ling Road, Yau Tong

TEL: 2663 2808

**BYD 沙田陳列室**

地址: 沙田安群街 3號京瑞廣場一期地下G51號舖

電話: 2663 0818

**BYD 西貢陳列室**

地址: 西貢惠民路28號 WM 酒店C1商舖

電話: 2663 0890

**BYD 將軍澳陳列室**

地址: 將軍澳唐俊街 21號翹匯坊G-1B

電話: 2663 0098

**BYD 油塘服務中心**

地址: 茶果岭道428號榮山工業大廈地下

電話: 2663 2808